



**YEAR IN REVIEW**  
2020-2021

Since 1964, Bloomingdale School of Music (BSM) has provided open and continuous access to high-quality music education to all, regardless of economic status, ability level, ethnicity, or religious affiliation.

**ACCESS**

We believe music is for everyone. We work with students to overcome financial or personal obstacles by offering aid and flexibility. We provide a variety of ways to perform, learn, and experience music in a vast array of styles, including classical, jazz, rock, and world music.

**DIVERSE AND INCLUSIVE**

We are as diverse as the city of New York. We create an environment of multiple voices, where each member is inspired to be their best self, any person feels safe in this self-expression, and every participant is valued for their individual perspective. A community that unites all ages, classes, and cultures, BSM finds common purpose through the language of music.

**COMMUNITY**

We welcome all people into our musical world. We celebrate the connections music brings to our community, both within BSM and in our neighborhood at large. We hold our teachers and our students in high esteem, and we regard each person's musical potential with the utmost respect.

**EXPRESSION AND CONNECTION**

We believe music reflects our humanity and our complexity. Through music,

all students have the potential to enhance their personal confidence, community responsibility, discipline, kindness, self-possession, and humility. In addition, it provides a joyful mode of expression and exchange; it assists in social, personal, and cognitive development; it allows students to accept "delayed gratification" and the deeper rewards that come when putting in sustained work over time; and it fosters a strong work ethic. It is a means of expression and connection, of comfort and understanding, and of renewal and inspiration.

**EXCELLENCE**

We strive for the highest level of achievement in our education, teaching, and performance endeavors. We match students with the finest teaching artists available who will shape their lessons to meet the individual drive, talent, and passion of each person. We seek excellence in artistry, education, communication, and exchange. While we work towards top caliber musical results, we are equally focused on the excellence of our process. We want to shape a collective journey where the humanity, individuality, and creative exploration of our students is prioritized.

# LETTER FROM THE EXECUTIVE DIRECTOR



## DEAR BLOOMINGDALE COMMUNITY,

Like the rest of the world, the 2020-2021 school year was one of great discovery, transition, and innovation for our school. It has been an honor for all of Bloomingdale to be a place of musical learning, experiences, and community for so many during these difficult times.

Despite it all, we accomplished so many incredible milestones throughout the year. I joined the Bloomingdale community at the beginning of the fall semester, and over the course of the year we:

- Had over 450 students study music through online lessons, ensembles, and group classes
- Engaged hundreds of community members and friends of the school online through our faculty concerts, recitals, masterclasses, and concerts.
- Raised almost \$200,000 together through campaigns and benefits, supporting our music and scholarship programs.
- Made critical renovations to our brownstone to create a safer and more welcoming environment for our community.

None of this would have been possible without YOU – our students, families, staff, faculty and supporters! As we move forward into our next chapter, I am excited to see what the future holds for us here at BSM as we continue to work to build new and diverse programs, invest in our technology and brownstone, and most importantly – increase our impact in the community.

Best,

A handwritten signature in black ink that reads "Erika Atkins".

Erika Atkins  
Executive Director

# 2020-2021 SNAPSHOT

SINCE 1964, BLOOMINGDALE SCHOOL OF MUSIC (BSM) HAS PROVIDED OPEN AND CONTINUOUS ACCESS TO HIGH-QUALITY MUSIC EDUCATION TO ALL, REGARDLESS OF ECONOMIC STATUS, ABILITY LEVEL, ETHNICITY, OR RELIGIOUS AFFILIATION.

450

STUDENTS IN THE AFTER-SCHOOL & WEEKEND PROGRAM

\$204,227

IN FINANCIAL AID SCHOLARSHIPS  
AWARDED TO 168 STUDENTS

30

ONLINE EVENTS

1500

AUDIENCE MEMBERS

## PROGRAM HIGHLIGHTS

### Adults

76 students  
1 partnership

### Summer

162 students in-person  
132 students online

### Online Faculty Concerts

18 concerts  
56 performers  
774 audience members

## NEW LOOK

Thanks to a generous \$350,000 donation from the Baisley Powell Elebash Fund, Bloomingtondale was able to make a **massive gut renovation** to its **second floor** spaces, including new flooring, plumbing, electrical and HVAC.

## SPECIAL EVENTS

### Annual Appeal

\$119,197 funds raised for scholarships

### Spring Benefit

\$67,677 funds raised for scholarships  
158 people watched online

### Performathon

\$24,800 funds raised for scholarships  
80 students participated  
113 unique donations

### Total

\$205,674 raised for scholarships



# COVID-19 & OUR COMMUNITY/ ONLINE LEARNING

In response to the call for social distancing, BSM continued to gather our community by reimagining 100% of our programming and special events online. The pandemic taught staff to innovate through technology, creating robust online learning experiences and resources that furthered Bloomingdale's mission of open access to all. Teachers and students worked together to develop individualized instruction that could translate over the internet, picking inspiring repertoire

and setting up the technology for optimum success; extra camera angles helped students see teachers' fingers moving at the piano, for example, while optimal sound and external mic settings helped simulate being in-person. Many students were able to express their emotional stress both verbally and through their music-making, using their online lessons as an important therapeutic tool during an unprecedented time.



The infographic features two main data points. On the left, a white circle with a dark blue outline contains the number '30' in a large, bold, dark blue font, with the words 'ONLINE EVENTS' in a smaller, bold, dark blue font below it. On the right, a white rectangle with a dark blue outline contains the number '1500' in a large, bold, dark blue font, with the words 'AUDIENCE MEMBERS' in a smaller, bold, dark blue font below it. The background of the infographic consists of several horizontal lines in shades of orange, red, and purple.

**30**

**ONLINE EVENTS**

**1500**

**AUDIENCE MEMBERS**

# SCHOLARSHIPS & FINANCIAL AID

**BSM IS PROUD TO HAVE AWARDED OVER \$204,227 IN FINANCIAL AID & SCHOLARSHIPS FOR OUR 2020-2021 SCHOOL YEAR.**

## FINANCIAL AID COMMITMENT

Bloomington has a long-standing commitment to financial aid. Over **168 students** receive some form of aid with an average of \$150,000 in need-based financial aid awarded each year. BSM offers support for students of any age and ability level, from early childhood to adult learners. Funding is provided by the generosity of individual donors and charitable foundations.

**Need Based  
Financial Aid  
(142)**

**Music Access  
Project  
(15)**

**Project Bridge  
(11)**

**Need-based  
Financial Aid  
\$93,000**

**PB/MAP  
Scholarships  
\$111,000**

**Average Award Per  
Family:  
\$1,223/semester**

**Average Household  
Income Per Family:  
\$40,000**



# PROGRAM HIGHLIGHTS 2020-2021

**BLOOMINGDALE WAS A STABILIZING FORCE IN THE LIVES OF HUNDREDS OF FAMILIES DURING THE HEIGHT OF THE PANDEMIC CLOSURES IN NYC.**



**"I have never been a part of a community that is so kind and supportive."**

**-Aurelia, Bloomingdale student**



# PROGRAMS

## AFTER SCHOOL & WEEKEND

Weekly private and group lessons on over 20 different instruments.

## MUSIC ACCESS PROJECT (MAP)

Pre-college training program for talented low-income and underserved high school students.

## PROJECT BRIDGE (PB)

Project Bridge supports the students and teachers participating in New York City public secondary school instrumental ensembles.

## BLOOMINGDALE TRAINING PROGRAM (BTP)

Bloomingtondale Training Program (BTP) is a comprehensive music education program designed for students ages 8 to 17 who are interested in making the most of their music education by enhancing their private lesson studies with chamber music, theory, and other special events.

---

Enrollment: Summer 2020: 269 | Fall 2020: 444 | Spring 2021: 456

**450**  
STUDENTS



# ADULT CLASSES

## ADULT CLASSES

Adult classes found new ways to thrive online during the pandemic closure. Jazz Ensemble, Music Theory, and Flute Ensemble all provided stimulating remote learning experiences for adults.

---

**Jazz Ensemble**, led by Micheal Cochrane, shifted online and made use of JamKazam's platform to have real time rehearsals with each other. Bloomingdale made the premium version of the platform available for students free of charge.

**Music Theory Classes**, taught by Sebastian Cruz saw growth as students were online and the class adapted easily to the Zoom format. Adult classes specifically saw growth in introductory levels.

**BSM's Senior Flute Ensemble**, led by Tereasa Payne, had a lively year. With its multi-generational group of players, it represents the collaborative spirit of learning music at Bloomingdale. Their performance of "The Star Spangled Banner" was selected to be shown at the 2021 Men's College World Series. Flute choir consists of middle and high school students, as well as adults ranging in age from their 30s to 60s - including our former ED, Erika Floreska and Senior Director of Programming, Laura Gravino.

**Adult Guitar Ensemble** continued meeting weekly with no interruptions throughout the year, and the format of the online class consisted of ensemble playing, technique workshops, and students solo performances followed by class discussions.

**76**  
**ADULT**  
**STUDENTS**



# ENSEMBLES

## BLOOMINGDALE OFFERS ENSEMBLES FOR MUSICIANS AT A WIDE RANGE OF SKILL LEVELS, FOR STRINGS, WINDS, BRASS, PERCUSSION, AND VOICE.

---

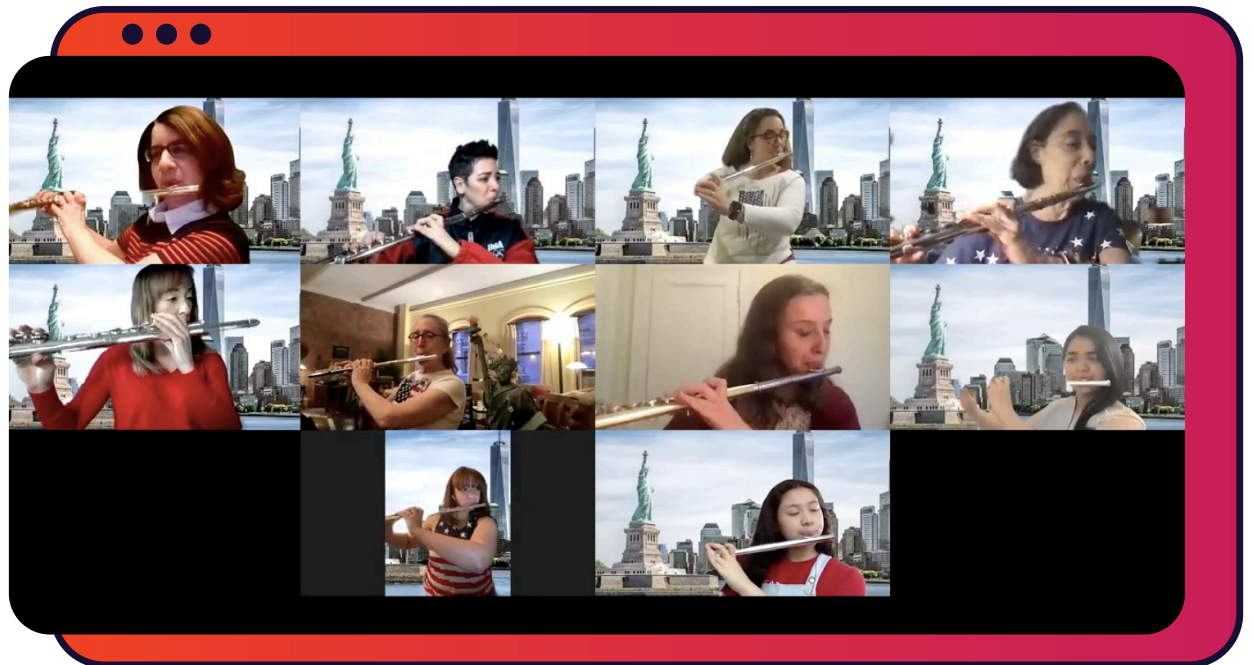
**Virtual Broadway Ensemble** members study character development, musical theater stylistic singing, and the history of musical theater.

**Preparatory Flute Choir** Entry level Flute Choir open to students with 3 months to 3 years of flute study. Music parts are tailored to best suit each student's abilities and comfort level.

**Trumpet Ensemble** works on ensemble playing, intonation, blending, and rhythmic study. The ensemble performs publicly several times a year at trumpet recitals, Sharing Hours, and special events.

**Guitar Orchestra** participants develop skills playing with other musicians and perform at Bloomingdale's yearly guitar festival and throughout each semester.

**Junior Guitar Orchestra** focuses on developing student's sight-reading, rhythm and ensemble playing skills.



# JUST FOR FUN

Just for Fun brought the Bloomingdale community together for pure social fun from Trivia Nights, to yoga, to singing from home. Over 129 people joined in over the course of 5 Just for Fun events, furthering BSM's community online during the height of the pandemic. This series of enjoyable, interactive virtual events was our way of staying connected with students and the greater community through the COVID pandemic while the school's physical building was closed.

A highlight of the series was the Sing- Along with Anna and Elsa, which was held in November 2020. Voice faculty member Rachel Querreveld and guest artist Hannah Friesen led more than 70 families in a fun and interactive musical journey to rescue the snowman Olaf.

**"The sing-along was a great experience for kids of all ages to get together virtually and experience a fun time. It was creative and engaging."**

**-Sara W. (Frozen Sing Along, Nov. 2020)**



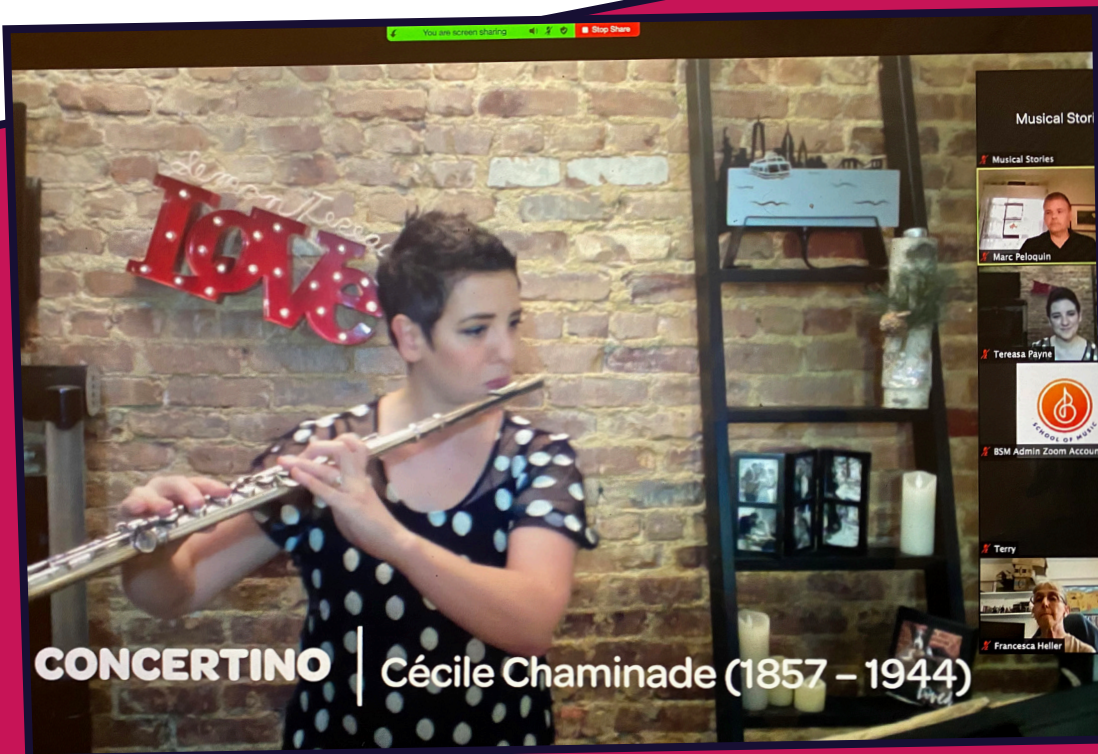
# ONLINE FACULTY CONCERT SERIES

Bloomington successfully transitioned its popular free concert series online. Moving the concerts online allowed Bloomington to further its mission of open access to anyone who registered. Viewers tuned in from countries all over the world.

**18**  
CONCERTS

**56**  
PERFORMERS

**774**  
AUDIENCE  
MEMBERS



# A4TY: ALBUM FOR THE YOUNG

## STUDENT COMPOSING PROJECT



Vada performing the commission work by Jacinta Clusellas during the online presentation.

A4TY: Album for the Young, our student composing project, successfully transitioned to a completely remote format. **14 students participated in the fall workshops** with teaching artists from the NY Philharmonic's Very Young Composer's Program and **28 students composed new works** for varied instrument combinations that they all pre-recorded and played at the

online concert on March 7, 2021. In addition, Jacinta Clusellas was commissioned to write a piece for solo guitar, performed as a duet with teaching artist Dr. José Maldonado and his student Vada Bank. **Over 45 BSM students and faculty** members participated remotely in the project this year.

# MUSIC ACCESS PROJECT / PROJECT BRIDGE

## MUSIC ACCESS PROJECT (MAP)

Bloomington's signature program, the Music Access Project, is a three-year pre-college training program featuring high-quality instruction and personal mentoring.

Since 1992, MAP has offered an intensive, yet nurturing musical environment, fostering professional and personal development while providing guidance for students aspiring to gain entry into a university or conservatory. MAP is unique among music training programs in that it is targeted specifically to talented high school students who are unable to gain entry into similar programs due to high tuition costs and limited financial aid.

## PROJECT BRIDGE (PB)

Project Bridge nurtures a student's musical talents through a weekly private lesson with a gifted teacher. Teachers work with students to build on their strengths and show them how to grow their skills on their instrument. The musical development from lessons allows the students to pay it forward and contribute more in their school band or orchestra.

### MAP SCHOLARSHIPS

Summer 2020 - **\$2,840**

Fall 2020 - **\$38,840**

Spring 2021 - **\$38,840**

### PB SCHOLARSHIPS

Summer 2020 - **\$2,150**

Fall 2020 - **\$14,432**

Spring 2021 - **\$13,940**

## STUDENT HIGHLIGHT:

**Tristan Negri, MAP  
percussionist, came full circle  
after 3 years, graduating with  
a full scholarship to double  
major in music and political  
science at SUNY Purchase  
College.**



# PARTNERSHIPS

## BLOOMINGDALE CONTINUED SEVERAL PARTNERSHIP PROGRAMS REMOTELY IN 2020-2021.

---

**The School at Columbia** held a Keyboard for Children and two Voice for Children classes. Each semester finished with an online performance for friends and family.

**Morningside Retirement and Health Services:** Bloomingdale offered three classes/semester with our senior neighbors – exploring composers and music in an online lecture series. Instrument-based classes were paused due to the lack of in-person activity. Students enjoyed the time sharing and learning music with their neighbors through lively conversation led by Marc Peloquin, one of BSM’s resident teaching artists.

**P.S.75 Emily Dickinson School:** Due to DOE regulations, we were not able to send a faculty member into the school to support their full time music teacher but we were able to assist in preparation of their online 5th grade graduation. Voice faculty Rachel Querreveld prepared over 50 students to sing, film, and record their individual parts for two songs which were edited together to form a digital choir, shared widely online and presented as a feature during 5th grade graduation.

**Bloomingdale Family Program (BFP):** Early Childhood faculty Shoshana Vogel taught online classes for our youngest partnership students.

**Partnerships:** 4  
**Students:** 144  
**Faculty:** 5

**Performances:** 4  
**Student performers:** 170  
**Total Audience:** 500

**“Those of us who have participated in the classes hope that they will continue as long as we have COVID-enforced restrictions. I think for many of us, the music and the opportunity to discuss the composers, performers, and the times they emerged from has been an important event to look forward to at the end of a week.”**

**-Mary Davidson, resident at MRHS**

# FESTIVALS

**12 FACULTY MEMBERS**  
**413 PARTICIPANTS**

## **Guitar Festival**

The annual Guitar Festival was held online from February 26-27, consisted of two online, pre-recorded student performances, a masterclass with João Luiz, and a concert featuring BSM's own faculty members, followed by a special performance by João Luiz for our community.

## **Voice Festival**

The annual Voice Festival was held online on June 12. In the early afternoon, four vocal students had the chance to share their music with guest artist Vanessa Ballam, who provided a masterclass. In the late afternoon, students representing all five voice studios performed as part of an online recital, singing music ranging from classical, to jazz, to popular repertoire.

## **Piano Project**

In recognition of the 250th anniversary of his birth, our 13th season of the Piano Project celebrated Beethoven, whose influence is widely regarded as seminal to the history of Western music. The event was held online on March 20, 2021 and featured two concerts of both students and faculty members performing Beethoven's music.



# SUMMER

**BLOOMINGDALE SAW 91% HIGHER ENROLLMENT FROM  
SUMMER 2019 TO 2020.**



**162**  
STUDENTS

**132**  
ONLINE  
STUDENTS

**71**  
IN-PERSON  
STUDENTS

**50**  
GROUP CLASS  
STUDENTS

# GUITAR SYMPOSIUM

During summer 2020, BSM hosted one week of faculty-led, in-person workshops and activities engaging students in all different genres for guitar, from Bach Partitas in the morning, to improvising over Johnny B. Goode, and ensemble rehearsal in the afternoon. Students performed alongside their teachers, with **8 students and 8 faculty members** participating throughout the week. Two concerts featured faculty and student performances.



# CONTINUITY

Going into the fall 2020 semester, we have been able to retain 100% of our staff of 7 Full-Time, and 7 Part-Time admin, as well as our 5 Full-Time Resident Teaching Artists and 58 Faculty members, thanks to relief funding and general operating support from foundations such as the Edwin Caplin Foundation. This was critical to providing stability as we continued to pivot our programming entirely online. Additional programming designed for remote learning and virtual experiences included lecture classes, a new online community engagement series, and online master classes and recitals.



# FUNDRAISING

**BLOOMINGDALE'S "MAKE MUSIC MATTER" END-OF-YEAR APPEAL SAW  
RECORD-BREAKING SUPPORT.**

**\$119,197**

**FUNDS RAISED FOR SCHOLARSHIPS**



# SPRING BENEFIT

Our spring benefit, “A Symphony of Bloomingdale,” highlighted and celebrated the strength of our community during a difficult time through performances of students, faculty and guest artists from Broadway. Featured artists included Bloomingdale’s Broadway Ensemble, Bloomingdale’s Senior Flute Choir, Bloomingdale’s Van Lier and Arena/D’Eletto Fellows, Alyssa Fox (Frozen, Wicked), Aisha Jackson (Frozen), and Chondra Profit-Ardrey (The Lion King). More than **158 people** were able to watch the event, which raised **\$61,677.74**.



# \$61,677

FUNDS RAISED FOR SCHOLARSHIPS



# PERFORMATHON

This year, our annual Performathon that raises funds for financial aid featured **80 students** who participated by sharing video performances and asking donors to sponsor their music-making. The event raised \$24,800.81 from over **113 unique donations** and brought the community online for a shared purpose – providing access to music.



# \$24,800

FUNDS RAISED FOR SCHOLARSHIPS



# BACK TO THE BROWNSTONE

## BLOOMINGDALE COMPLETED NUMEROUS SAFETY UPGRADES TO THE BUILDING SO STAFF AND STUDENTS WOULD RETURN TO A COVID-SAFE LEARNING ENVIRONMENT:

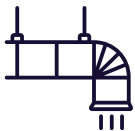
### GENERAL SAFETY UPGRADES



- Hand sanitizer stations throughout school
- Fresh air ventilation systems in basement & 2nd floor
- New no-touch bathroom doors on 3rd & 4th floors



- Air purifiers in every classroom
- Room occupancy limits



- Usage of outside backyard for waiting area
- New water filters in 3rd & 4th floor coolers
- Masks available for public usage

- Daily health screenings
- Basement renovations:
- New HVAC ventilation systems
- New teller windows
- New front basement door
- New bathroom window
- Boiler room joist repair

# 2ND FLOOR GUT RENOVATION UPGRADED WIRING & HVAC SYSTEM

**THANKS TO A GENEROUS \$350,000 DONATION FROM THE BAISLEY POWELL ELEBASH FUND, BLOOMINGDALE WAS ABLE TO MAKE A MASSIVE RENOVATION TO ITS SECOND FLOOR SPACES, INCLUDING:**

- New ceilings
- New plumbing
- New electrical
- New air filtration system
- New lighting
- New flooring
- New sub-flooring
- New library doors
- New library radiators
- Fresh paint on walls and trim
- Pocket door discovered in use with installation of new track
- Tapestry room fireplace restoration
- Installation of backyard stairway
- New furniture
- New library blinds
- New riser to supply additional power to building
- New 2nd floor radiator covers
- New tapestry room door
- New tapestry room window
- New thermostats and zoned HVAC
- New IT closet



# THANK YOU TO OUR PARTNERS & SUPPORTERS!

## \$1-199

Rachael Abbick	Holly Sickinger-Bifulci	Alyssa Click	Eduardo Espinal	Network For Good
Bj Adler	Jonny Belt	Laurie Collins	Cristina Fabricant	Fabiola Gorgonio
Noel Adler	Alain Benzaken	Nancy Comerford	Alan Fagan	Amy Gort
Krista Adler	Alliance Bernstein	Nicole Conlisk	Eliot and Lincoln Faith	Gabrielle Goubran
Sarki Akiko	C/O Your Cause	Sally Cooney	Patricia Faith	Emma Gravino
Patrick Alexander	Tracey Bernstein	Chad Cooper	Armanda Famiglietti	Laura Gravino
Maria Almonte	Helene Blieberg	Kerry A Whorton Cooper	Detra Smith- Farrell	Vivienne Greaves
Andres Alonso	Alan Boarts	Lindsey Crane	Sor Feliz	Nancy Griesberg
Janet Alperstein	Judy Bolton-Fasman	Shane Cunha	Sally Fenley	Stephen Gunn
Jeffrey and Rana Altenburg	Amy Bowe	Iyanna Cunningham	Patricia Filopoulos	Vera Gurpinar
Cynthia Alvarez	Peter Boysen	Ronan Curran	Norman Fischer	Seth Haberman
Melih Anil	Jonathan Bozbeckian	Kathleen Curtin	Amanda Fischer	Renee Saundres-Harris
Adnan Antonio	Melissa Brecher	Kathryn Daas Den	Steve Flores	Mary Haggerty
Barbara Appel	Sally Brenner	Johanna Daily	Cristina Font	Margaret Kingsbury Hansen
Ron Armstrong	Karen Brocklehurst	Justin Daniel	Jesse Forcello	Vinicio Haro
Winifred Armstrong	Ashley Browne	Joan Dannenberg	Jean Fuschetti	Ann Harrell
Frank Aronson	Ronald Bruno	Renuka Das	Vanize Gallimore	Kate Hassey
Molly Aronson	Elizabeth Bundock	Carline DeGuire	Angela Garcia	Lauren Hernando
David Asher	Gabriela Burch	Jennifer DiBella	Ruth Garcia	Yvette Hewitt
Ann Aspinwall	Kristine Burton	Ruth Diroma	John Gattis	Liam A. Hill
Erika Atkins	Yessenia Camilo	Daniel Dobryn	Marc Gautier	Zenaida Hill
Suzanne Aupperle	Richard Caner	Patricia Dominguez	Molly Gelb	Kaoru Hinata
John Austin	Jane Cannon	Yael Dresdner	Barton Gellman	Heather Hindo
Maria Babcock	David Cantor	Benetta Dunning	Jose Genao	Anne Hirsh
Luisa Badaracco	Jeffrey Capetta	Jane Dwyer	Maxine Gillings	Katherine Hoffman
Mary Baker Gordon	Abraham Carmeli	Richard Edmonds	Christopher Gillings	Lily Holgate
Noelle Barbera	Santiago Carmona	Oliver Eduardo	Allyson Glass	Jamie Holland
Mindee Barham	Cathleen Carr	Yingcong Elan	David Gold	Elena Home
Nancy Barlow	Diana Castro	Dorothea Ellern	Jayson Goldberg	Sherry Husney
Rhonda Barnat	Rujeh Linus Chan	Lawrence Erdmann	Mitch Golden	The Inc. Nixon Company
Fawzia Batti	Vivian Chen	Brenda Erickson	Ana Gonzalez	Judith Insell
Miranda Beeson	Luosi Chen	Miriam Erickson	Blanca Iris Moreno-Gonzalez	Olga Itskovich
	Judith Scott-Clayton			

Lea Ivanovic	Amy Kolasky	Joanna Maurer	Melinda Perez-Porter	Elsa Sangurima
Suzy Myers Jackson	Cynthia Kong	James Maurer	Samantha Persaud	Justin Santiago
Prudence M. Costa Jenkins	Aaron Kuhn	Mary McClain	Denise Person	Matt Savage
Dalina Jiménez	Nicole Kwan	Catherine McCotter	Jennifer Peters	Susan Schmitt
Jennifer John	Susan Landis	Logan McCoy	Gary Phillips	Rhoda & Stephen Schneider
Shnieka Johnson	Samuel Lashlee	Jean McCurry	Eric Phinney	Loren Schoenberg
Marcus Johnson	Judith Lavezzari	Chris Mcaninch	Julie Pifer	Jim Schuck
Aline Johnson	Steven Leach	David Meer	Federica Pinelli	Emma Schuhose
Matthew Johnson	Jamie Y. Lee	Joslyn Meier	Martina Portychova	Erik Schurink
Laura J Johnson	Isabella Levenson	Barbara Michaels	Judith Pott	Catherine Scott
Nicholas Jones	Mary Levine	Daniel Michaels	Martha Pullen	Lynn See
Eyda Jove	Alan Levine	Robert Michaels	Michael Quoma	Steven Seltz
Classical Singing & NY in June	Gina Lewis	Miriam Mickel	Katie Rainey	Daniel Seltz
Heather Kaiser	Carol Lewis	Ellen Mittenthal	Normie Ranara	Patricia Sewell
Heidi Kaner	Robert Lieberman	Annette Mohammed	Kelly Ray	Patricia Shama
Ellen Kanter	Carol Liebman	Jaime Benitez Monge	Amy Reichel	Ramya Shankar
Stephen Katsaounis	Alice Lilly	Alison Monk	Chester Reimer	Michael Shari
Donna Katsaounis	Dafna Linzer	Beata Moon	Karen Reis	Nancy Sinkoff
Thomas Katz	Jean Lombardo	Katherin Morales	William Restemeyer	Thomas Skelton
Mindy Kaufman	Joan Lonergan	Nancy Morgan	Maurice Restrepo	Seth Slade
James Kelly	Daniel Long	Kevin Morgan	Veronica Riner	Virginia Smanik
Christine Kenney	Bevis Longstreth	Malcolm Morris	Chretien Risley	David Smiley
John Keohane	Deborah Lopez	Christina Morton	Mary Rivera Ann	Kathryn A. Smith
Jennifer Kessler	Ling Lopez	Rainer Muser	Judy Roberts	Frances Smyth
Ayinde Michael-Khensu	Irini M	Amy Nathan	James Roberts	Timothy Smythe
Erik Kihss	Li-Jun Ma	Kimberly Neary	Elliott Rogasik	Raquel Solomon
Marcia King	Christina Macchiarola	Chrystie Nguyen	Michelle Olson-Rogers	Myron Sosnow
Stephanie King	Irene Macias	Lorna Norris	Morgan Rosse	Ana Soto
Nancy Kingsbury	Matthew Maddalene	Dunbar Ogden	Julie Roth	Amy Sperling
Kathryn B Kirkland	Rochelle Makofsky	Mark Olson	Bernie Rubin	Monique Stafford
Thomas Kirkland	Miguel Maldonado	Zulma Miranda-Ortiz	Karen Robinson	Timothy Stambaugh
Galina Kirman	Edmund Mander	Gerardo Morantes Ordaz	Ashley Ryan	Cara J Stanard
Laura Kleger	Nelly Marrero	Teresa Palomero	Mary Sachs	Genevieve Stewart
Bruce Klein	Jahnisha Martin	Emily Parks	Kiye Sakai	Anne Stone
Madeleine Knutson	Joseph Martin	Naho Parrini	Maurice Samuels	Tim Strawderman
Regina Koehler	Alejandra Martinez	Taylor Patno	Ricardo Sanchez	Asu Swindell
Kati Koerner	Shadia Matthews	Tereasa Payne	Silvia Sangurima	Jeffrey Symons

Mary Symons  
 Tracy Tarter  
 Junior Tavarez  
 Edith J. Taylor  
 Marianela Torres  
 Joelle Toth-Dyer  
 William A. Traina  
 Carmen Tripo  
 Lori Danielle Tully  
 Erica Umback  
 Randi Urban  
 Lourdes Suarez Valle  
 Niurka Vasquez  
 Eliza Vega  
 Ana Vidot  
 Tomiko Vidot  
 Ramona Vila  
 Shoshana Vogel  
 Katharine Walling  
 Michelle Walsh  
 William Wang  
 Dorothy Webman  
 Leslie Weisman  
 Carol Weiss  
 Michelle Welch  
 Ashleigh Wessing  
 Jessica West  
 Carol White  
 Edward Whitney  
 Min. Clifford Williams  
 Kevin Wines  
 Arlene Wipfler  
 Theodore Wiprud  
 Gail Wofford  
 Caitlin Wong  
 Paula Wood  
 Michael Wright

Sijian Wu  
 Patricia Wynne  
 Yolanda Wyns  
 La Wynter  
 Sharoon Yanes  
 Larry Yates  
 Ivy Young  
 Michelle Young  
 Kevin Yu  
 Yong Yu  
 Perrier Yuen  
 Axel Zamojski  
 Ziwei Zhu  
 Satu Zoller  
 Angelyne E. De Veaux  
 Lauren St. George  
 Eva von Dassow

#### **\$200-499**

Ju-Lie Bell  
 Susan Blank  
 Latoya Brown  
 Kathleen Campbell  
 Robert Cane  
 Linda Chu  
 Austin & Co., Inc.  
 Diane Coffey  
 Russell DeCesare  
 Fabien Dufeu  
 Ken C. Fischer  
 American Express  
 Charitable Fund  
 Brian Gunn  
 Markie Hancock  
 Nancy Hawley  
 Harry M. Johnston III  
 Robert D. Krinsky  
 Juliet Kwan

Ellen Lee  
 Roni Kohen-Lemle  
 Lance Liebman  
 Janet McClendon  
 Rebecca Menon  
 Ellen Payzant  
 Richard Perez  
 Maria Barcellos-Raible  
 Sandra Roche  
 Nancy Schawaroch  
 Michael Seltz  
 Pat Sewell  
 Elana Shneyer  
 Damaris Abreu-Slater  
 Scott Sprinzen  
 Christine Symons  
 Lisa Warren  
 Andrew Young

#### **\$500-999**

Owen Aspinwall  
 Caroline W. Bynum  
 Darren Collins  
 Sabrina DaSilva  
 Dorothy Friedberg  
 Kristin Glen Booth  
 Amy Gluck  
 Antonia Grumbach  
 Karen Jewett  
 Judith Kessler  
 Mildred G. Ness  
 Anna A Penn  
 Jennifer Salzburg  
 Minna Saslaw  
 Laura Seligsohn  
 Suzy Stein  
 Julia C. Tobey  
 Jean Marie De Veaux

Marc Van de Mieroop  
**\$1,000-4,999**  
 New York City Department  
 for The Aging  
 Margaret M Aspinwall  
 Carole Barham  
 Robert S. Butler  
 Marie-Louise Escher Family  
 Charitable Foundation  
 The Libby Holman  
 Foundation  
 ACMP Foundation  
 Elizabeth Glazer  
 Andrea Gural  
 James E. Hunt  
 John Hunt  
 Jennifer Iwanicki  
 Benjamin Liebman  
 Katherine A. McDonough  
 Catherine McKenzie  
 Jessica Bulman-Pozen  
 Anthony Paraskevopoulos  
 Melissa Schoonveld  
 Brian Upbin  
 Kate Walbert

#### **\$5,000-49,999**

Con-Edison  
 Mati Adler  
 Scripps Family Fund  
 Ed & Arts  
 TD Bank  
 D. E. Shaw & Co.  
 Erika S. Floreska  
 Max and Victoria Dreyfus  
 Foundation  
 The M & T Charitable  
 Foundation  
 The Ella Fitzgerald

Charitable Foundation  
 Cornelia T. Bailey Foundation  
 Jarvis & Constance  
 Doctorow Family Foundation  
 Milbank Memorial Fund  
 The Morris and Alma  
 Schapiro Fund  
 Aaron and Pinelopi Goldberg  
 Youth Inc  
 Patrice Jean  
 Burton Kassell  
 Bradley Kulman  
 Kenneth Michaels  
 Arthur Michaels  
 Paul M. Ness  
 Alison Nowak  
 Sarah Paul  
 Randall Rosman  
 John Sanchez  
 Columbia Community  
 Service  
 Béla Szigethy

#### **\$50,000- 175,000**

The Edwin Caplin  
 Foundation  
 The Bay and Paul  
 Foundations  
 Baisley Powell Elebash Fund



# FACULTY & STAFF 2020-2021

## FACULTY

Mark Appling Guitar classical

Molly Aronson, Cello

Eli Asher, Trumpet

Rhiannon Banerdt , Violin

Alicia Bennett, Clarinet

Daniel Bennett , Sax-Wind Ensemble

Ed Broms, Theory

Christine Browning, Vocal-Ens

Aaron Butler, Dalcroze

Margalit Cantor, Cello

Tahira Clayton, Voice, Partnerships

Michael Cochrane, Jazz Piano

Frank Cohen, Trombone

Alejandro Cote, Guitar Classical

Sebastian Cruz, Guitar all

Amber Evans, Voice

Maria Figueroa, cello

Jamie Fox, Guitar

Carrie Frey, Violin, Viola

Lauren Greenberg, Voice

Rebekah Greene, Classical Bass Teacher

Olga Gurevich, piano

Roberto Hidalgo, Piano

Kaoru Hinata, Flute, Project Bridge

Katherine Hoffman, Recorder, Sight Singing

Mark Katsaounis, Percussion

Anna Khanina, Piano-group

Mina Kusumoto, piano

Daniel Lamas, violin/viola

Allison Lander, Piano

Zach Lapidus, Piano, Jazz

Ling Lopez, Violin

José Gabriel Maldonado Guitar

Nuno Marques, Piano

Douglas Marriner, Percussion

Tim McCullough, Piano, Accompanist

Jocelyn Medina, Voice

Mark Mollica, Jazz Improv

Judith Olson, Piano

Patti Onorato, Early Childhood

Jessica Park, Violin

Naho Parrini, Violin

Tereasa Payne, Flute

Marc Peloquin, Piano, Concert AD

Eric Phinney, Percussion

Lisa Pike, French Horn

Mica Poerio, Violin, Viola

Rachel Querreveld, Voice

Lynn Rice See, Piano

Claudia Schaer , Violin

Rie Schmidt, Suzuki Flute

Gili Sharett, Bassoon

Nora Spielman, Guitar all

Marianela Torres, Piano

Yvonne Troxler, Piano

Brandon Vazquez, Trumpet

Monica Verona, Piano, Archives

Shoshana Vogel, Early Childhood

Weiwei Zhai, Piano

## STAFF

Erika Atkins, Executive Director

Brandon Vazquez, Senior Director

Laura Gravino Director of Education

Lohengrin Velasquez, Director of Student Services

Mark Appling Education Manager

Margalit Cantor, Project Manager

Ling Lopez, Events Manager

Senami Atinkpahoun, Marketing & Communications Manager

Veronica Riner, Registration Manager

John Gattis, Development Coordinator

Marianela Torres, Finance Coordinator

Linda Zhang Registrar

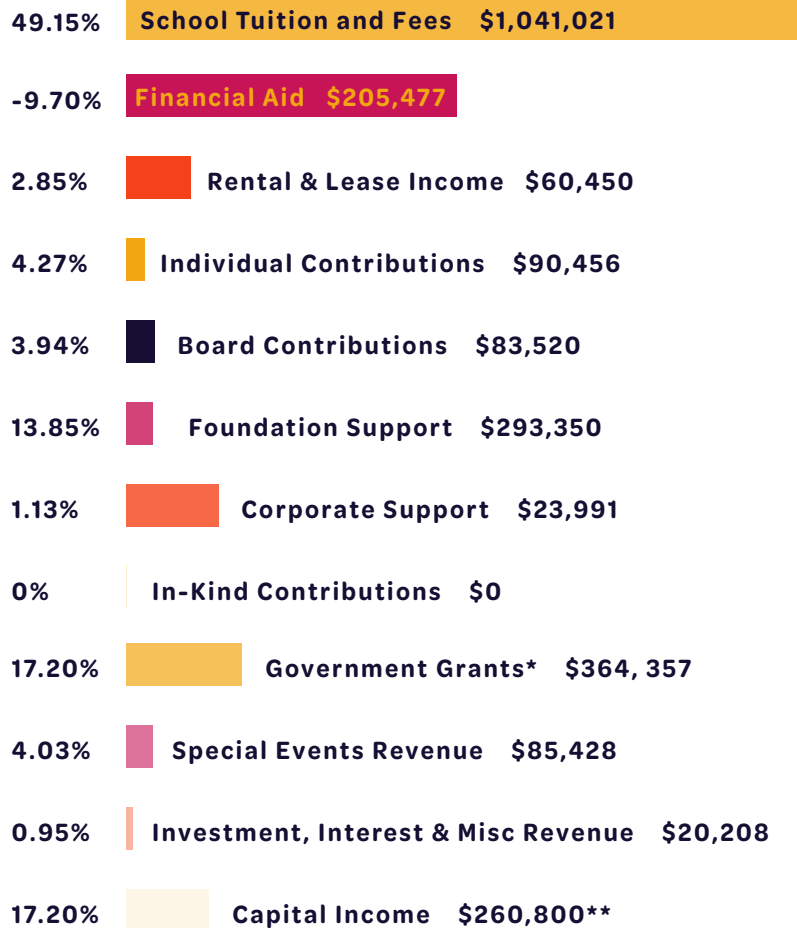
Grace Azcona, Executive Assistant

Alyssa Click, Marketing & Communications Assistant

Yanitza Lee, Assistant Registrar

# FINANCIAL INFORMATION

## REVENUE = \$2,118,103

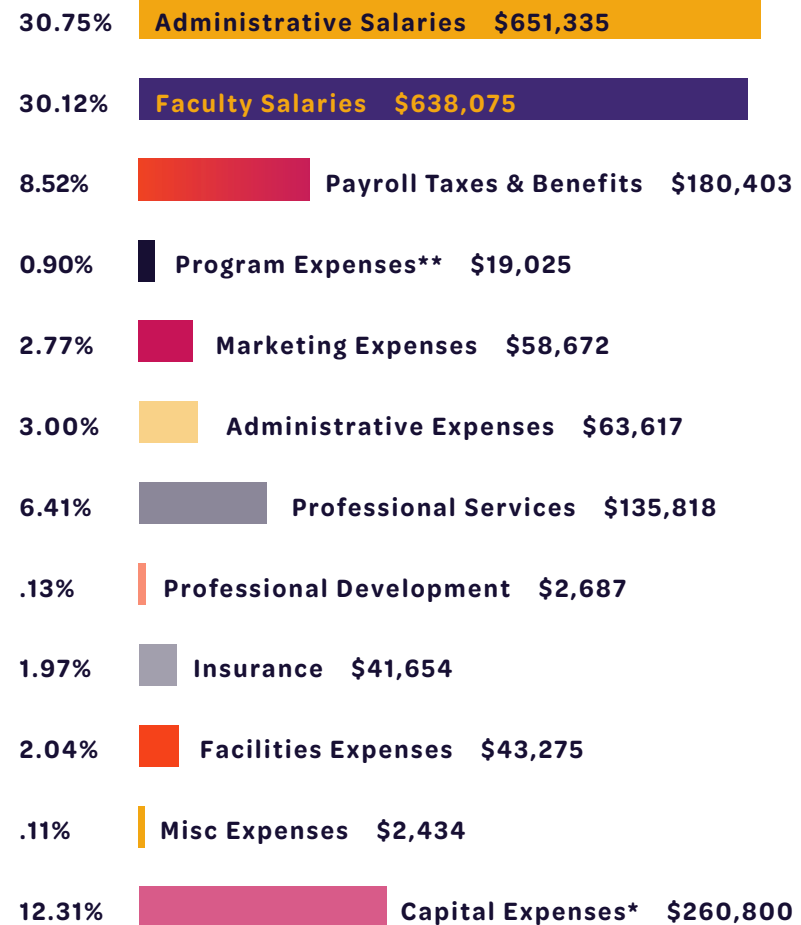


Financial Aid included above (\$205,477)

\* Includes PPP Loan Forgiveness of \$313,207

\*\* The remaining \$89,200 of \$350,000 capital grant spent in the FY22 fiscal year as 2nd floor renovation was completed.

## EXPENSES = \$2,097,795



\* The remaining \$89,200 of \$350,000 capital grant spent in the FY22 fiscal year as 2nd floor